



The King Who Came to Us

“God so loved the world
that He gave
His one and only Son.”
John 3:16a



The King Who Came to Us

“God so loved the world
that He gave
His one and only Son.”
John 3:16a



The King Who Came to Us

“God so loved the world
that He gave
His one and only Son.”
John 3:16a



The King Who Came to Us

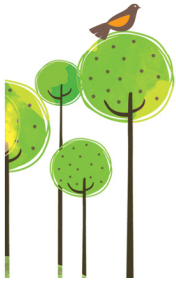
“God so loved the world
that He gave
His one and only Son.”
John 3:16a

PONDER! Gather your family to light the Bethlehem Candle, the third candle on your Advent Crown Wreath. (To create an Advent Crown Wreath, use gold foil to make a crown. Place four candles in holders around the inner rim. Place a fifth candle as the "Christ Candle" in a holder in the center.) Read Luke 2:1-7. Talk about the birthplace of baby Jesus.



PRAY! Pray this prayer each day this week: "Lord, thank You that Jesus was born in Bethlehem. Thank You that Jesus is our King. Amen."

PLAY! Act out the story of Luke 2:1-7. Assign the roles of Mary, Joseph, and innkeepers to family members. Choose rooms in your home to be Bethlehem inns and pretend one area is a stable. Mary and Joseph knock on the doors of the inns. The innkeepers say, "No room in the inn." Everyone gathers in the stable to talk about his or her birthplace.



K&K Ages 4-K U10L50

PONDER! Gather your family to light the Bethlehem Candle, the third candle on your Advent Crown Wreath. (To create an Advent Crown Wreath, use gold foil to make a crown. Place four candles in holders around the inner rim. Place a fifth candle as the "Christ Candle" in a holder in the center.) Read Luke 2:1-7. Talk about the birthplace of baby Jesus.



PRAY! Pray this prayer each day this week: "Lord, thank You that Jesus was born in Bethlehem. Thank You that Jesus is our King. Amen."

PLAY! Act out the story of Luke 2:1-7. Assign the roles of Mary, Joseph, and innkeepers to family members. Choose rooms in your home to be Bethlehem inns and pretend one area is a stable. Mary and Joseph knock on the doors of the inns. The innkeepers say, "No room in the inn." Everyone gathers in the stable to talk about his or her birthplace.



K&K Ages 4-K U10L50

PONDER! Gather your family to light the Bethlehem Candle, the third candle on your Advent Crown Wreath. (To create an Advent Crown Wreath, use gold foil to make a crown. Place four candles in holders around the inner rim. Place a fifth candle as the "Christ Candle" in a holder in the center.) Read Luke 2:1-7. Talk about the birthplace of baby Jesus.



PRAY! Pray this prayer each day this week: "Lord, thank You that Jesus was born in Bethlehem. Thank You that Jesus is our King. Amen."

PLAY! Act out the story of Luke 2:1-7. Assign the roles of Mary, Joseph, and innkeepers to family members. Choose rooms in your home to be Bethlehem inns and pretend one area is a stable. Mary and Joseph knock on the doors of the inns. The innkeepers say, "No room in the inn." Everyone gathers in the stable to talk about his or her birthplace.



K&K Ages 4-K U10L50

PONDER! Gather your family to light the Bethlehem Candle, the third candle on your Advent Crown Wreath. (To create an Advent Crown Wreath, use gold foil to make a crown. Place four candles in holders around the inner rim. Place a fifth candle as the "Christ Candle" in a holder in the center.) Read Luke 2:1-7. Talk about the birthplace of baby Jesus.



PRAY! Pray this prayer each day this week: "Lord, thank You that Jesus was born in Bethlehem. Thank You that Jesus is our King. Amen."

PLAY! Act out the story of Luke 2:1-7. Assign the roles of Mary, Joseph, and innkeepers to family members. Choose rooms in your home to be Bethlehem inns and pretend one area is a stable. Mary and Joseph knock on the doors of the inns. The innkeepers say, "No room in the inn." Everyone gathers in the stable to talk about his or her birthplace.



K&K Ages 4-K U10L50