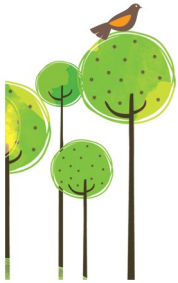




PONDER! To celebrate the coming of Jesus as a family, light candles on your Advent wreath (a circle of greenery and four candles). This week, gather your family to light two candles. As you light candle number two, Mary's candle, read Luke 1:28-33. Imagine how amazing it would be to hear an angel tell you and your family members, "The Lord is with you."



PRAY! Pray this prayer each day this week: "Lord, thank You for coming near to Mary and letting her be part of Your miracle. Thank You for being with Mary and for being with us now. Amen."



PLAY! Being "highly favored" means God is pleased with you. Gather your family and take turns sharing positive behaviors your family members do that would be pleasing to God. Examples include smiling, helping others, sharing, following directions, and listening well.

GW Ages 4-5 U10L49

PONDER! To celebrate the coming of Jesus as a family, light candles on your Advent wreath (a circle of greenery and four candles). This week, gather your family to light two candles. As you light candle number two, Mary's candle, read Luke 1:28-33. Imagine how amazing it would be to hear an angel tell you and your family members, "The Lord is with you."



PRAY! Pray this prayer each day this week: "Lord, thank You for coming near to Mary and letting her be part of Your miracle. Thank You for being with Mary and for being with us now. Amen."



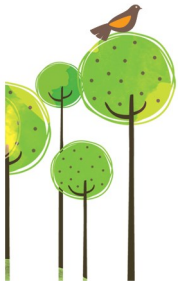
PLAY! Being "highly favored" means God is pleased with you. Gather your family and take turns sharing positive behaviors your family members do that would be pleasing to God. Examples include smiling, helping others, sharing, following directions, and listening well.

GW Ages 4-5 U10L49

PONDER! To celebrate the coming of Jesus as a family, light candles on your Advent wreath (a circle of greenery and four candles). This week, gather your family to light two candles. As you light candle number two, Mary's candle, read Luke 1:28-33. Imagine how amazing it would be to hear an angel tell you and your family members, "The Lord is with you."



PRAY! Pray this prayer each day this week: "Lord, thank You for coming near to Mary and letting her be part of Your miracle. Thank You for being with Mary and for being with us now. Amen."



PLAY! Being "highly favored" means God is pleased with you. Gather your family and take turns sharing positive behaviors your family members do that would be pleasing to God. Examples include smiling, helping others, sharing, following directions, and listening well.

GW Ages 4-5 U10L49

PONDER! To celebrate the coming of Jesus as a family, light candles on your Advent wreath (a circle of greenery and four candles). This week, gather your family to light two candles. As you light candle number two, Mary's candle, read Luke 1:28-33. Imagine how amazing it would be to hear an angel tell you and your family members, "The Lord is with you."



PRAY! Pray this prayer each day this week: "Lord, thank You for coming near to Mary and letting her be part of Your miracle. Thank You for being with Mary and for being with us now. Amen."



PLAY! Being "highly favored" means God is pleased with you. Gather your family and take turns sharing positive behaviors your family members do that would be pleasing to God. Examples include smiling, helping others, sharing, following directions, and listening well.

GW Ages 4-5 U10L49