



PONDER! To celebrate the coming of Jesus as a family, light candles on your Advent wreath (a circle of greenery and four candles). This week, gather your family to light three candles. As you light candle number three, the Bethlehem candle, read Luke 2:1-7. Ask your parent what it was like when you were born or when you first came home to your family.



PRAY! Pray this prayer each day this week: "Lord, thank You for coming near to everyone in Bethlehem. Thank You for leaving heaven and being born in a manger. Amen."



PLAY! Travel with your family around your neighborhood and sing "Away in a Manger" or another favorite Christmas carol. As you walk, imagine the journey Mary and Joseph took to Bethlehem.

GW Ages 4-5 U10L50

PONDER! To celebrate the coming of Jesus as a family, light candles on your Advent wreath (a circle of greenery and four candles). This week, gather your family to light three candles. As you light candle number three, the Bethlehem candle, read Luke 2:1-7. Ask your parent what it was like when you were born or when you first came home to your family.



PRAY! Pray this prayer each day this week: "Lord, thank You for coming near to everyone in Bethlehem. Thank You for leaving heaven and being born in a manger. Amen."



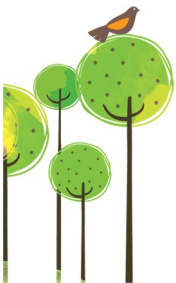
PLAY! Travel with your family around your neighborhood and sing "Away in a Manger" or another favorite Christmas carol. As you walk, imagine the journey Mary and Joseph took to Bethlehem.

GW Ages 4-5 U10L50

PONDER! To celebrate the coming of Jesus as a family, light candles on your Advent wreath (a circle of greenery and four candles). This week, gather your family to light three candles. As you light candle number three, the Bethlehem candle, read Luke 2:1-7. Ask your parent what it was like when you were born or when you first came home to your family.



PRAY! Pray this prayer each day this week: "Lord, thank You for coming near to everyone in Bethlehem. Thank You for leaving heaven and being born in a manger. Amen."



PLAY! Travel with your family around your neighborhood and sing "Away in a Manger" or another favorite Christmas carol. As you walk, imagine the journey Mary and Joseph took to Bethlehem.

GW Ages 4-5 U10L50

PONDER! To celebrate the coming of Jesus as a family, light candles on your Advent wreath (a circle of greenery and four candles). This week, gather your family to light three candles. As you light candle number three, the Bethlehem candle, read Luke 2:1-7. Ask your parent what it was like when you were born or when you first came home to your family.



PRAY! Pray this prayer each day this week: "Lord, thank You for coming near to everyone in Bethlehem. Thank You for leaving heaven and being born in a manger. Amen."



PLAY! Travel with your family around your neighborhood and sing "Away in a Manger" or another favorite Christmas carol. As you walk, imagine the journey Mary and Joseph took to Bethlehem.

GW Ages 4-5 U10L50